



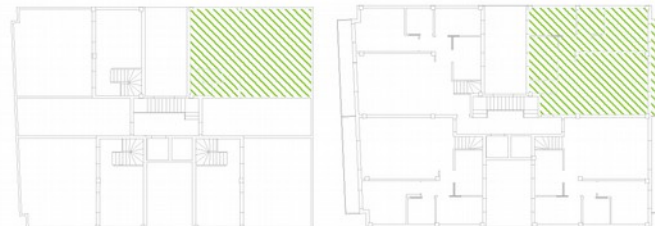
SUPERFICIES ÚTILES APROXIMADAS

| | |
|--------------------------|----------------------|
| Recibidor | 1,96 m ² |
| Salón - comedor - cocina | 28,71 m ² |
| Distribuidor | 3,53 m ² |
| Baño 1 | 3,61 m ² |
| Dormitorio 1 | 6,46 m ² |
| Dormitorio 2 | 6,76 m ² |
| Dormitorio Principal | 12,24 m ² |
| Escala | 1,80 m ² |
| Espacio diáfano | 19,73 m ² |

| | |
|------------|----------------------|
| Total Útil | 84,80 m ² |
| Terraza | 30,16 m ² |
| Balcón | 10,19 m ² |

TOTAL CONSTRUIDO

| | |
|--------------|-----------------------------|
| TOTAL | 101,52 m² |
|--------------|-----------------------------|



LEYENDA

- AT - AEROTERMIA
- L/S - LAVADORA / SECADORA
- LV - LAVAPLATOS
- N - NEVERA
- H/M - HORNO / MICROONDAS